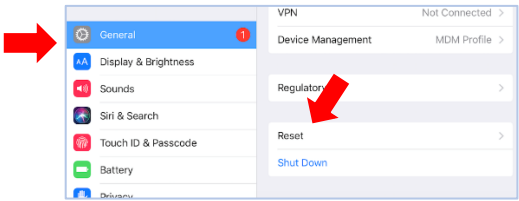


1. Tap **Settings**

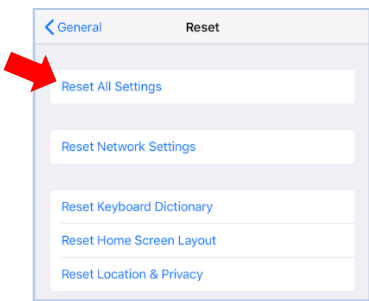


2. Tap **General**

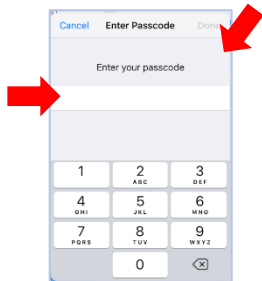


3. In the right column scroll to the bottom of the page and tap **Reset** (see diagram above.)

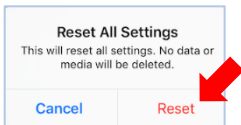
4. Tap **Reset All Settings** (You won't lose any documents. It only sets the iPad back to factory setting).



5. Enter your **Passcode** and tap **Done**.

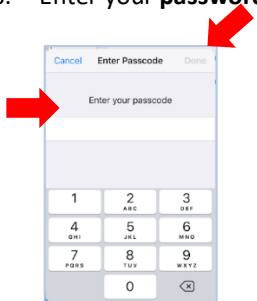


6. Tap **Reset**; your iPad reboots.

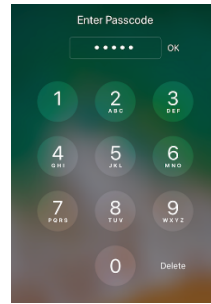


7. When prompted "**Press home to upgrade**", press the **Home** button

8. Enter your **password** and tap **OK**.



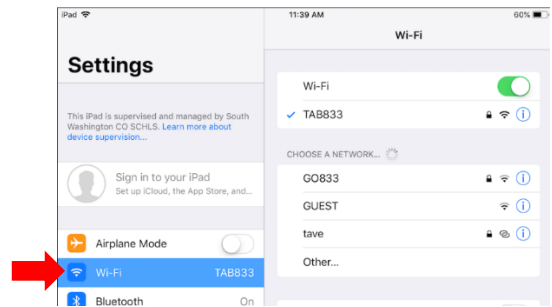
9. Log back into the iPad



10. Tap **Settings**



11. Tap **Wi-Fi** (left column) and connect to **your** WiFi



12. Tap the **Home** button (see diagram below)

13. Find and tap on the **Oltman** icon



14. If or when you are prompted with the proxy settings, enter your:

- **USERNAME** (do not include the @[apps.district833.org](http://apps.district833.org))
- **PASSWORD**



**HOME BUTTON**

1. Tap **Settings**
2. Tap **General**
3. In the right column scroll to the bottom of the page and tap **Reset**
4. Tap **Reset All Settings** (*You won't losing any documents. It only sets the iPad back to factory setting.*)
5. Enter your **Passcode** and tap **Done**.
6. Tap **Reset**; your iPad reboots.
7. When prompted "**Press home to upgrade**", press the **Home** button
8. Enter your **password** and tap **OK**.
9. Log back into the iPad
10. Tap **Settings**
11. Tap **Wi-Fi** (*left column*) and connect to your WiFi
12. Tap the Home button
13. Find and tap on the **Oltman icon**
14. If or when you are prompted with the proxy settings, enter your
  - a. **USERNAME** (*do not* include the [@apps.district833.org](mailto:apps.district833.org))
  - b. **PASSWORD**